

South Hero & Folsom School: The Challenging Puzzle of Act 46



Melanie Henderson
January 27, 2017

South Hero's History with Act 46

- Grand Isle schools formed a Study Committee
- After a year of debate, the Committee chose to pursue a K-6 merger
- South Hero currently receives a Small Schools Grant and 3.5% Hold Harmless protection
- To retain State funding, South Hero must merge
- Joining the Islands merger would require South Hero to change our structure

Changing our structure to K-6 would
have been the simplest solution...
...but not necessarily the best one!



Folsom and Act 46

Many South Hero residents feel passionate about our K-8 structure!

To explain why, we gathered the following:

- Feedback from South Burlington high school
- Folsom's 7th/8th course schedule
- Standardized test data
- Free & Reduced Lunch data
- Structure map for surrounding towns



Academics & Preparation

Feedback from South Burlington High School:

“Generally speaking, Folsom students do very well here and contribute much to the SB community!”

– *Debbie Beretta, Guidance Outreach*

Percentage of 2015 Folsom Freshmen on the Honor Roll	
Quarter 1	100%
Quarter 2	78%
Quarter 3	89%
Quarter 4	78%

GPA Ranges for 2016 Folsom Sophomores, Juniors, & Seniors	
4.0 and up	5 Students
3.1 – 3.9	10 Students
2.0 – 3.0	4 Students

Conclusion:
Folsom students are well-prepared for 9th grade and beyond

Notes:

- Six 2015 Folsom freshmen took a Literacy assessment, and feedback indicated that their writing was strong
- No 2015 Folsom freshmen took the advanced math placement test
- No world language assessments are offered
- No data was provided on the remaining six 2016 upperclassmen

Academics & Preparation

7th/8th Grade course schedule includes:

- Integrated Social Thinking and Literacy (9 hrs)
- French (1.5 hrs for 7th, 3 hrs for 8th)
- Science (4.5 hrs)
- General math (4.5 hrs)
- Algebra (2 hrs for 8th)



Conclusion:
Folsom offers world
language & advanced math

Plus:

- Art
- PE
- Library
- Music
- Guidance
- Goals
- Band/Chorus
- Tech
- Team Building

	Monday	Tuesday	Wednesday	Thursday	Friday
7:55 – 8:50	7: Math 8: Science	7: Math 8: Science	7: Math 8: Science	7: Math 8: Science	7: Math 8: Science
8:50 – 9:45	7: Science 8: Math	7: Science 8: Math	7: Science 8: Math	7: Science 8: Math	7: Science 8: Math
9:45 – 10:15	5/8 Team Time	7/8: Coaching 8: Algebra	7/8: Coaching 8: Algebra	7/8: Coaching 8: Algebra	7/8: Coaching 8: Algebra
10:15 – 11:00	7: Art 8: French	7: PE 8: French	7: Art 8: French	7: PE 8: French	7: Library 8: Guidance
11:00 – 11:45	7: Guidance 8: Art	7: French 8: PE	7: Music 8: Art	7: French 8: PE	7/8 Band or 7/8 Tech
11:45 – 12:25	Lunch/ Recess	Lunch/ Recess	Lunch/ Recess	Lunch/ Recess	Lunch/ Recess
12:25 – 2:15	7/8 SS & ELA	7/8 SS & ELA	7/8 SS & ELA	7/8 SS & ELA	7/8 SS & ELA
2:15 – 3:00	7/8 WOD or 7/8 Study Skills (Nolan/Pidgeon)	5/8 Goals	7/8 Goals	5/8 Coaching (or Band)	5/8 Coaching (or Chorus)

Standardized Test Data

[NECAP Assessment Data for this Organization](#)

[School Report](#)

[Operating District Financial Information](#)

Organization:	Folsom Education & Community Center
Teaching Year:	2011-2012
Test/Subject:	NECAP Math Grade 08
Breakdown:	How did our students do?
Comparison:	Compared to its District and Vermont?

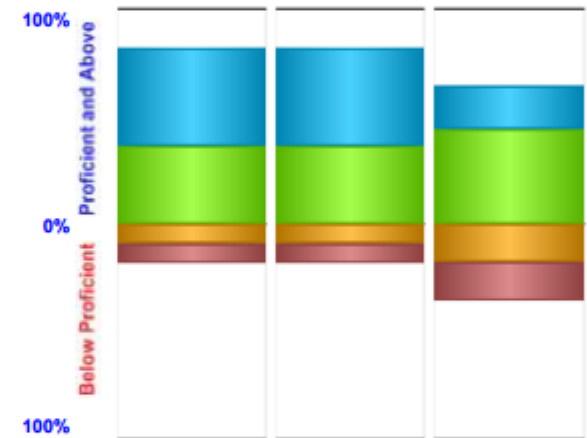
Gathered proficiency data for 7th & 8th Graders

- All Students
- All available subjects
- All local schools

Sources:

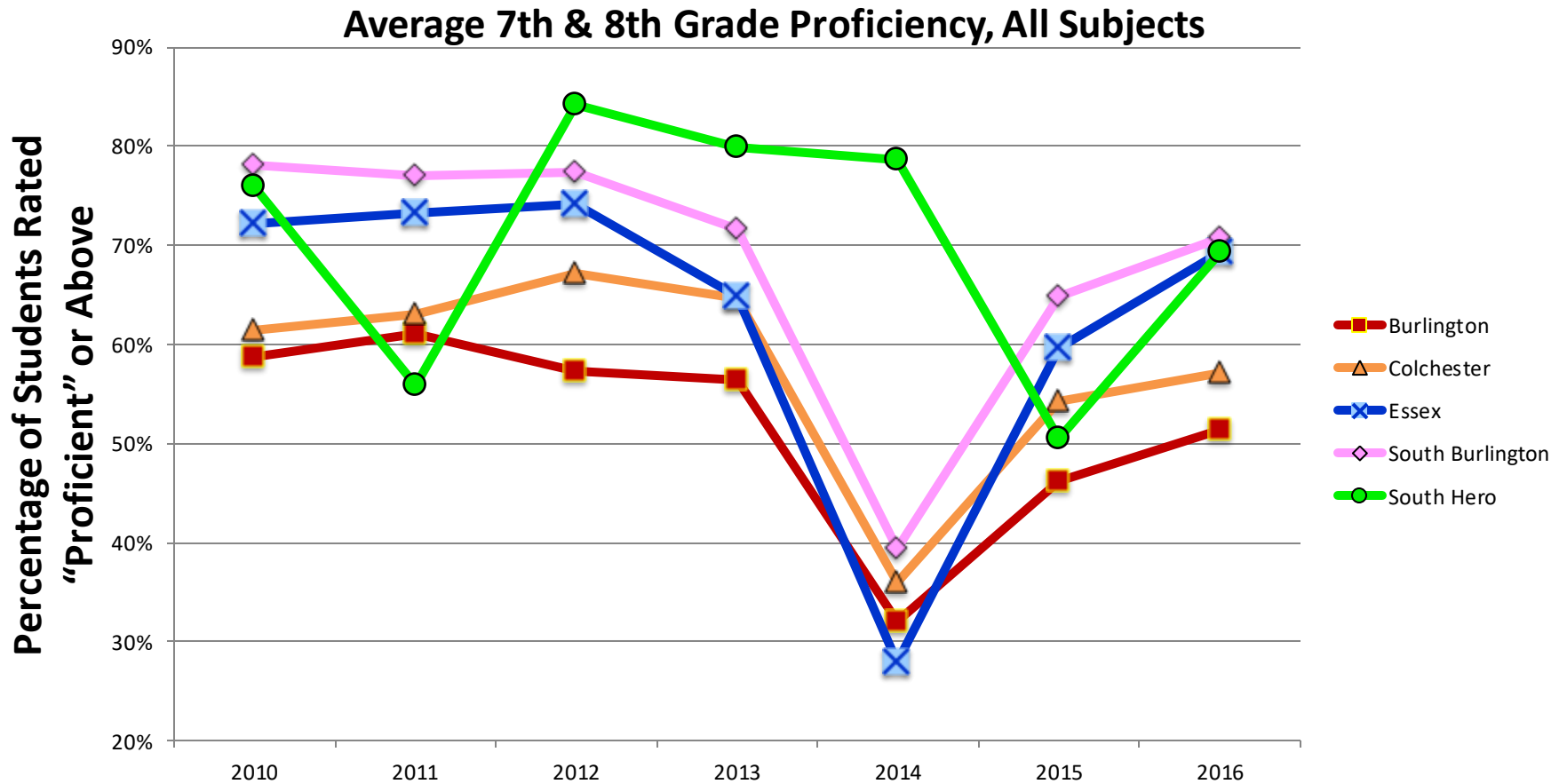
- 2015 & 2016 SBAC Test Data
- 2010 – 2014 NECAP Test Data

(Go to <http://education.vermont.gov/documents> Sort the File Format, and look for Spreadsheets with "SBAC", "Smarter-Balanced", or "NECAP" in the description)



	School	LEA	State
	All Students	All Students	All Students
Number of Students Tested	11	11	6,316
Proficient With Distinction	45 %	45 %	20 %
Proficient	36 %	36 %	44 %
Partially Proficient	9 %	9 %	18 %
Substantially Below Proficient	9 %	9 %	18 %
Total Proficient and Above	82 %	82 %	64 %
Total Below Proficient	18 %	18 %	36 %
Average Scaled Score	848.8	848.8	842.5

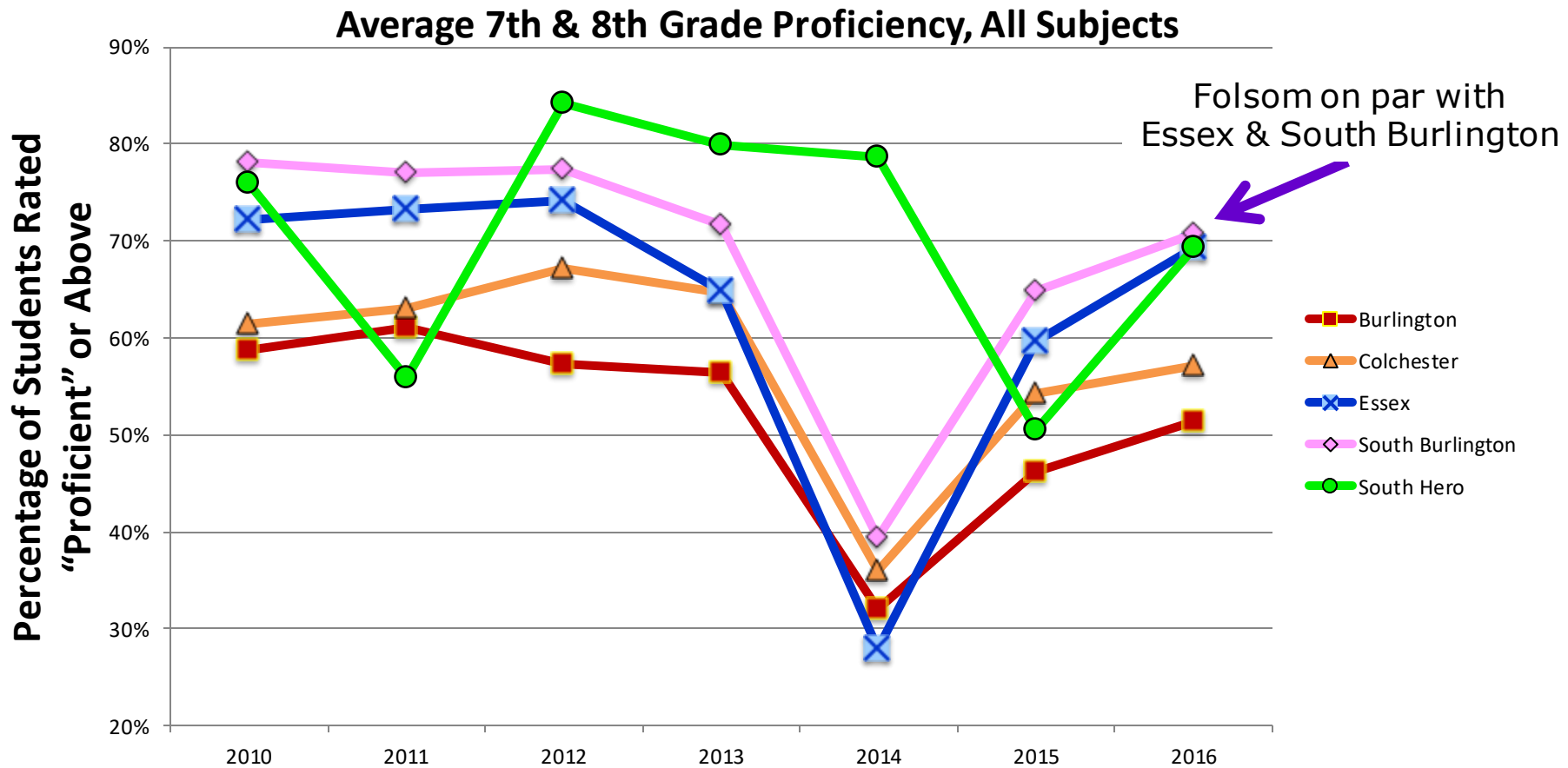
Standardized Test Data



Note:

- Scores only reported when class is ≥ 10 students. For some years, Folsom data is incomplete
- 2010 – 2013: 7th & 8th math, literacy, science, & writing (NECAPs)
- 2014: 8th grade science only (NECAP)
- 2015: 7th & 8th math & literacy (SBACs) & 8th science (NECAP)
- 2016: 7th & 8th math & literacy (SBACs)

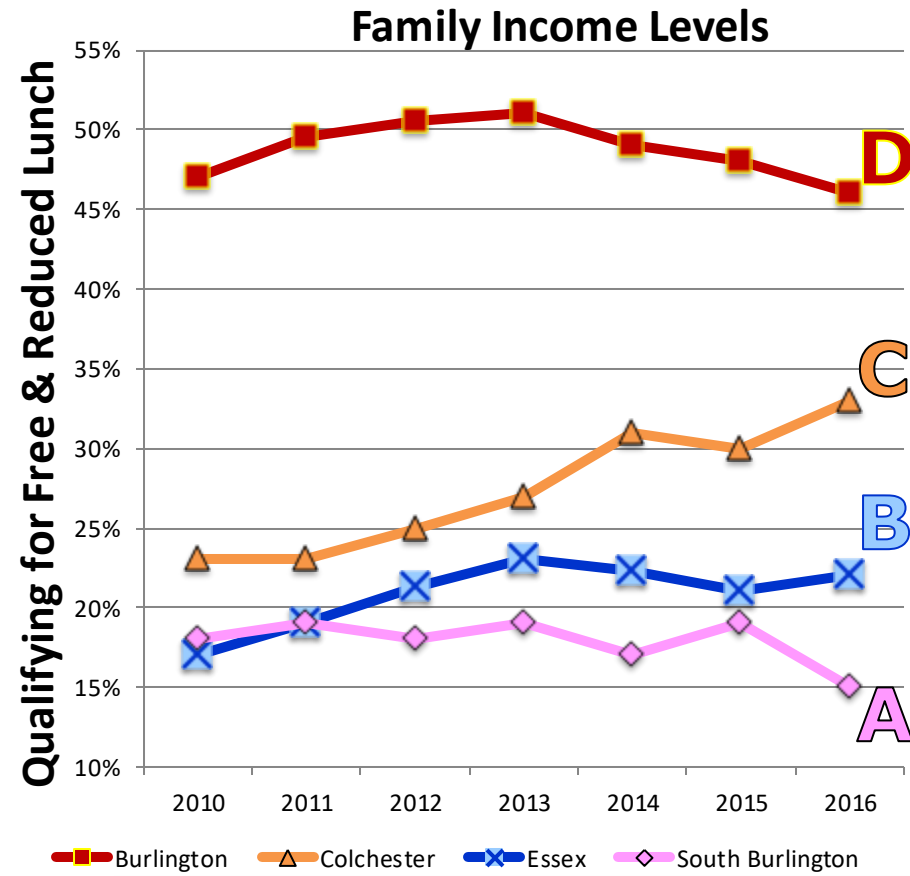
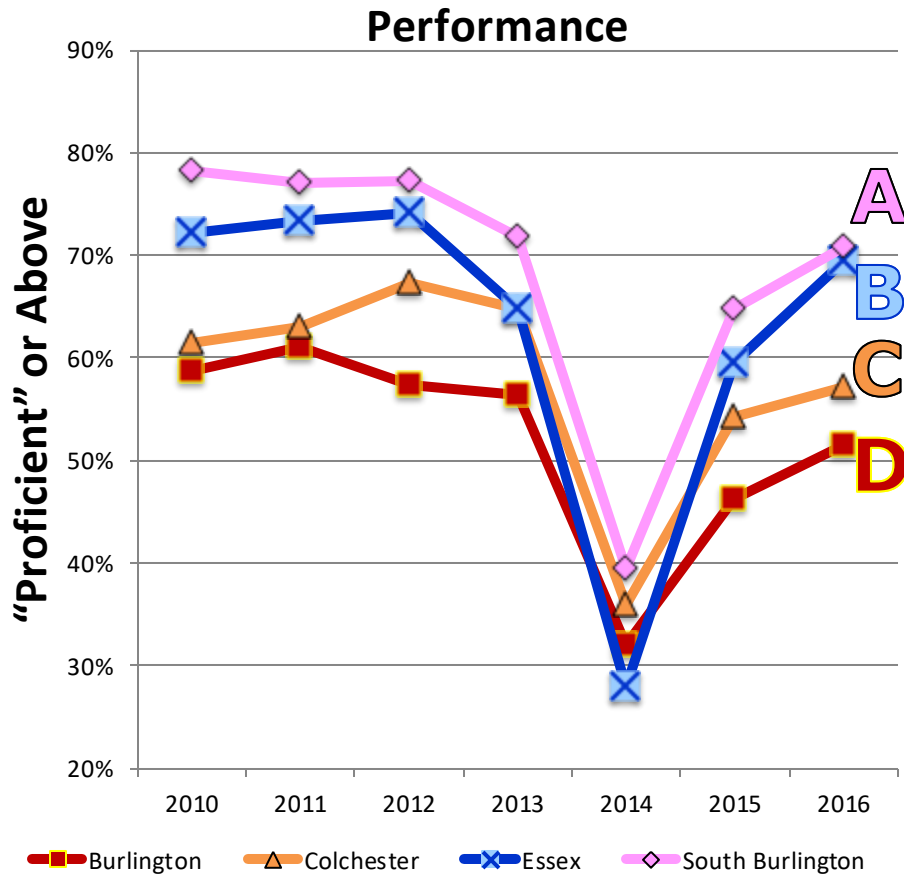
Standardized Test Data



Conclusions:

- For 5 out of 7 years, Folsom's performance matched or exceeded large middle schools

Economics vs. Performance



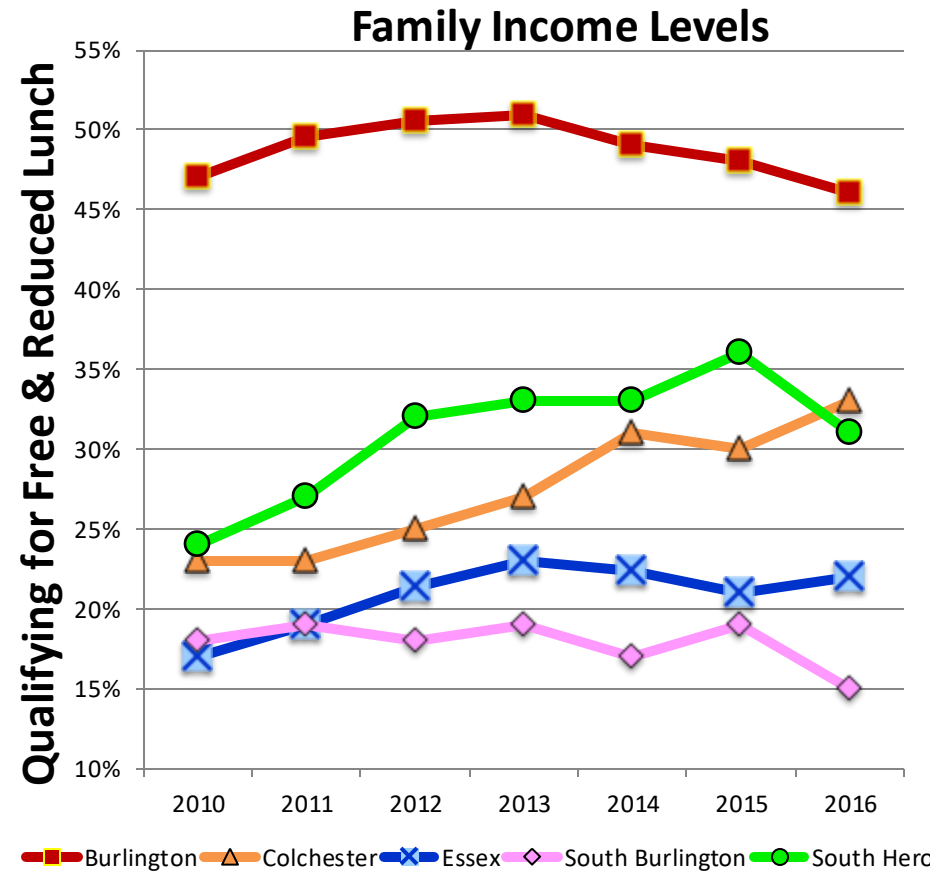
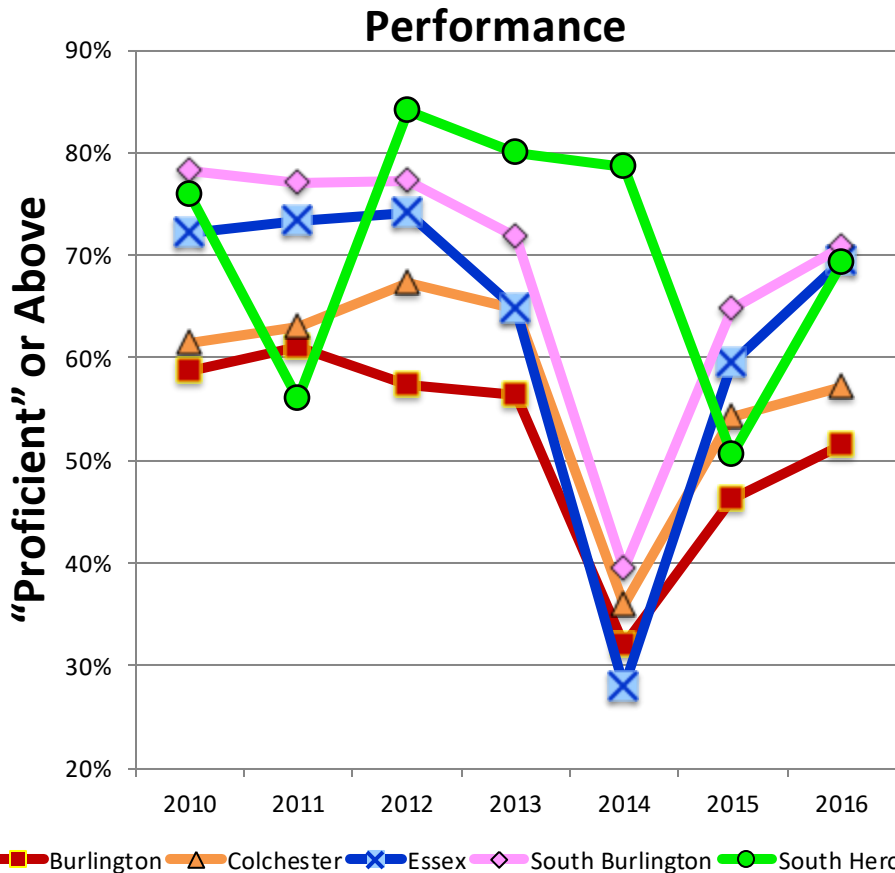
Source:

School Reports from Vermont AoE website

- <http://edw.vermont.gov/REPORTSERVER/Pages/ReportViewer.aspx?%2FPublic%2FSchool%20Report>
- Select school and year, and hit View Report
- Under Select Student Type, choose Family Income

Conclusions:
 FRL rates & academic performance are often inversely related

Economics vs. Performance



Conclusions:

- Folsom has high academic performance **and** moderately high FRL rates
- Folsom serves all students well

Folsom and Act 46

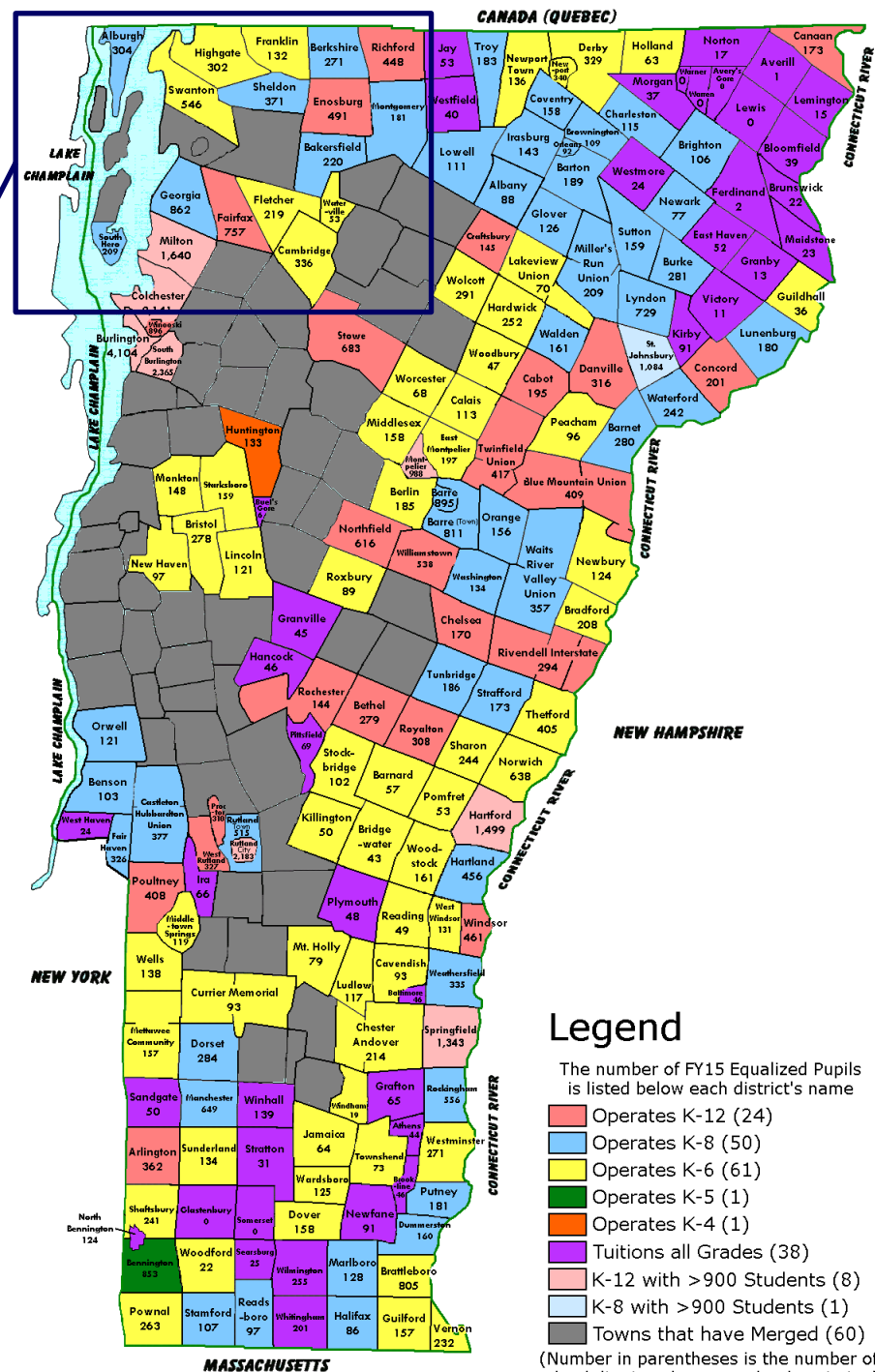
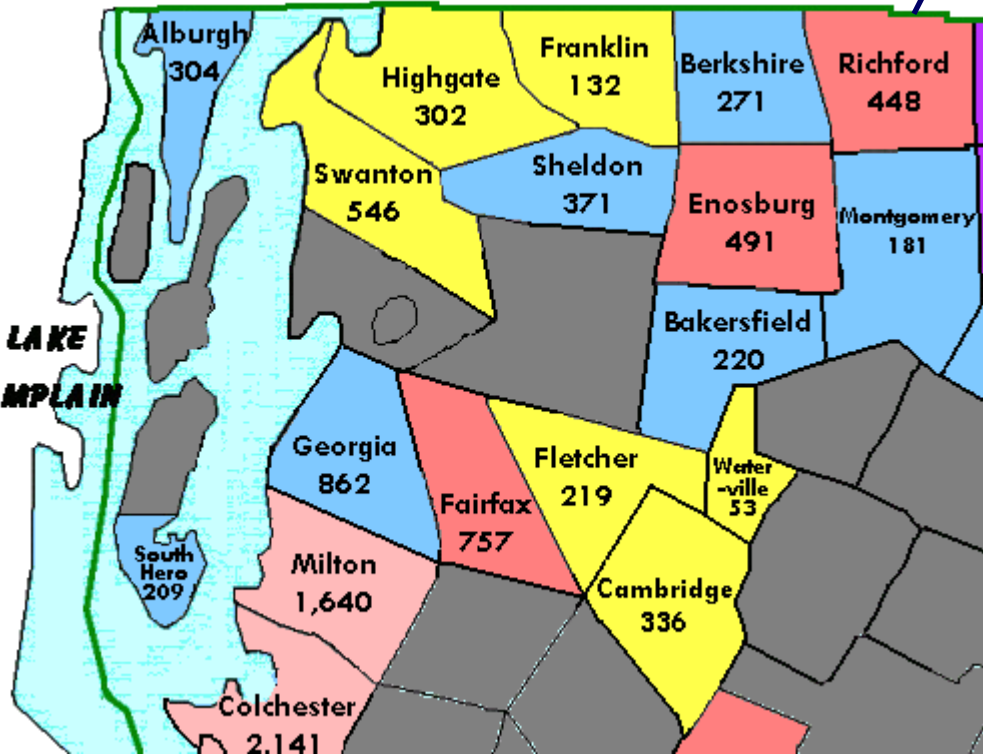
In Nov. 2016, South Hero voted to keep our K-8 structure!

We continue to work hard to find a K-8 merger in a preferred structure

However, our options are limited!



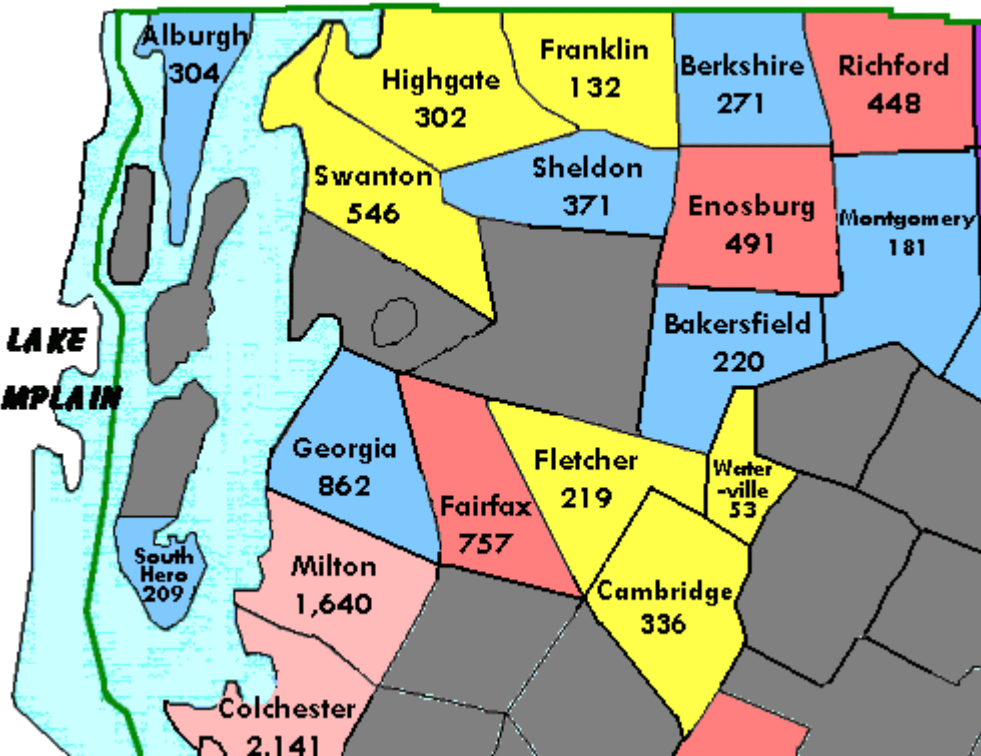
South Hero's K8 Merger Options



Conclusions:

- Folsom only has *one* K-8 preferred structure merger option!

South Hero's K8 Merger Options



- South Hero is willing to merge!
- A preferred structure merger with Georgia depends on the *Georgia voters!*
- All other options do not qualify for State funding

Conclusions:

- Folsom may be left with *no options* that allow us to keep our State funding
- Loss of funding may affect quality of programming

Final Thoughts

- Folsom is a great school!
- A successful school should not be forced to change its structure
- Schools should not lose funding if there is *no way* to comply with the law

What can we do?

- Publish the process and metrics for awarding Small School Grants sooner than 2018 (Act 46, Section 21)
- Consider a multi-year grant, rather than requiring schools to apply annually
- Make alternative structures eligible for State funding!